

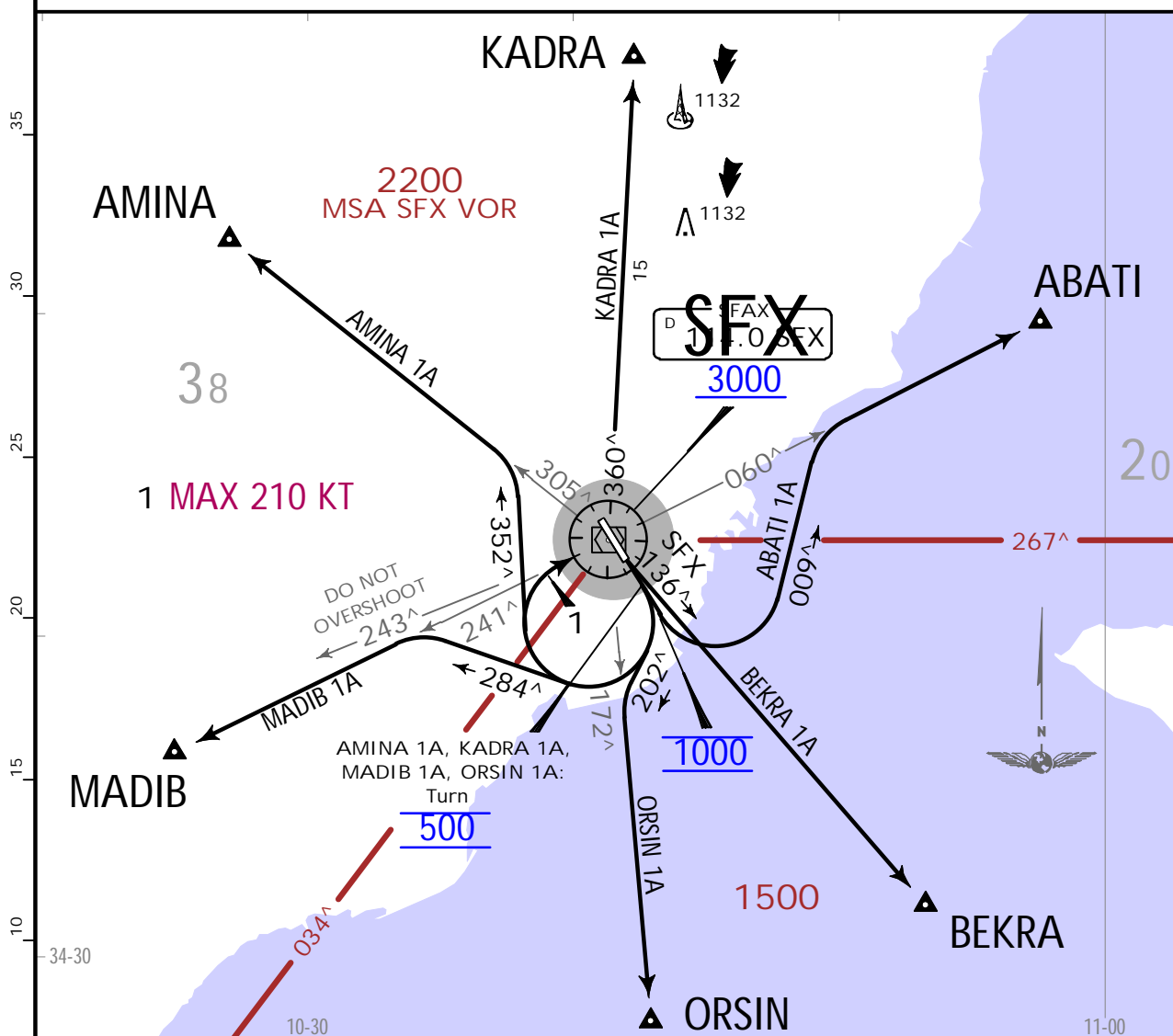
Apt Elev
85

Trans alt: 6000

ABATI 1A [ABAT1A], AMINA 1A [AMIN1A]
BEKRA 1A [BEKR1A], KADRA 1A [KADR1A]
MADIB 1A [MADI1A], ORSIN 1A [ORSI1A]

DEPARTURES (RWY 15)

.SPEED: MAX 250 KT BELOW FL100



These SIDs require minimum climb gradients of

| | |
|-----------|-------------------------------|
| ABATI 1A: | 377 per NM (6.2%) until 7500. |
| AMINA 1A: | 365 per NM (6.0%) until 6000. |
| BEKRA 1A: | 523 per NM (8.6%) until 7500. |
| KADRA 1A: | 365 per NM (6.0%) until 3000. |
| MADIB 1A: | 389 per NM (6.4%) until 7500. |
| ORSIN 1A: | 475 per NM (7.8%) until 7500. |

If unable to comply advise ATC.

| | | | | | | |
|--------------|-----|-----|------|------|------|------|
| Gnd speed-KT | 75 | 100 | 150 | 200 | 250 | 300 |
| 365 per NM | 456 | 608 | 913 | 1217 | 1521 | 1825 |
| 377 per NM | 471 | 628 | 943 | 1257 | 1571 | 1885 |
| 389 per NM | 486 | 648 | 973 | 1297 | 1621 | 1945 |
| 475 per NM | 594 | 792 | 1188 | 1583 | 1979 | 2375 |
| 523 per NM | 654 | 872 | 1308 | 1743 | 2179 | 2615 |

No turn permitted below 500.

| SID | ROUTING |
|----------|---|
| ABATI 1A | Climb straight ahead, at 1000 turn LEFT, 009^ track, intercept SFX R060 to ABATI. |
| AMINA 1A | Climb straight ahead, at 500 turn RIGHT, 352^ track, intercept SFX R305 to AMINA. |
| BEKRA 1A | Climb straight ahead, intercept SFX R136 to BEKRA. |
| KADRA 1A | Climb straight ahead, at 500 turn RIGHT to SFX, do not overshoot SFX R243, SFX R360 to KADRA. |
| MADIB 1A | Climb straight ahead, at 500 turn RIGHT, 284^ track, intercept SFX R241 to MADIB. |
| ORSIN 1A | Climb straight ahead, at 500 turn RIGHT, 202^ track, intercept SFX R172 to ORSIN. |

DTTX/SFA

THYNA



22 APR 22

10-3A

SFAX, TUNISIA

.SID.

Apt Elev

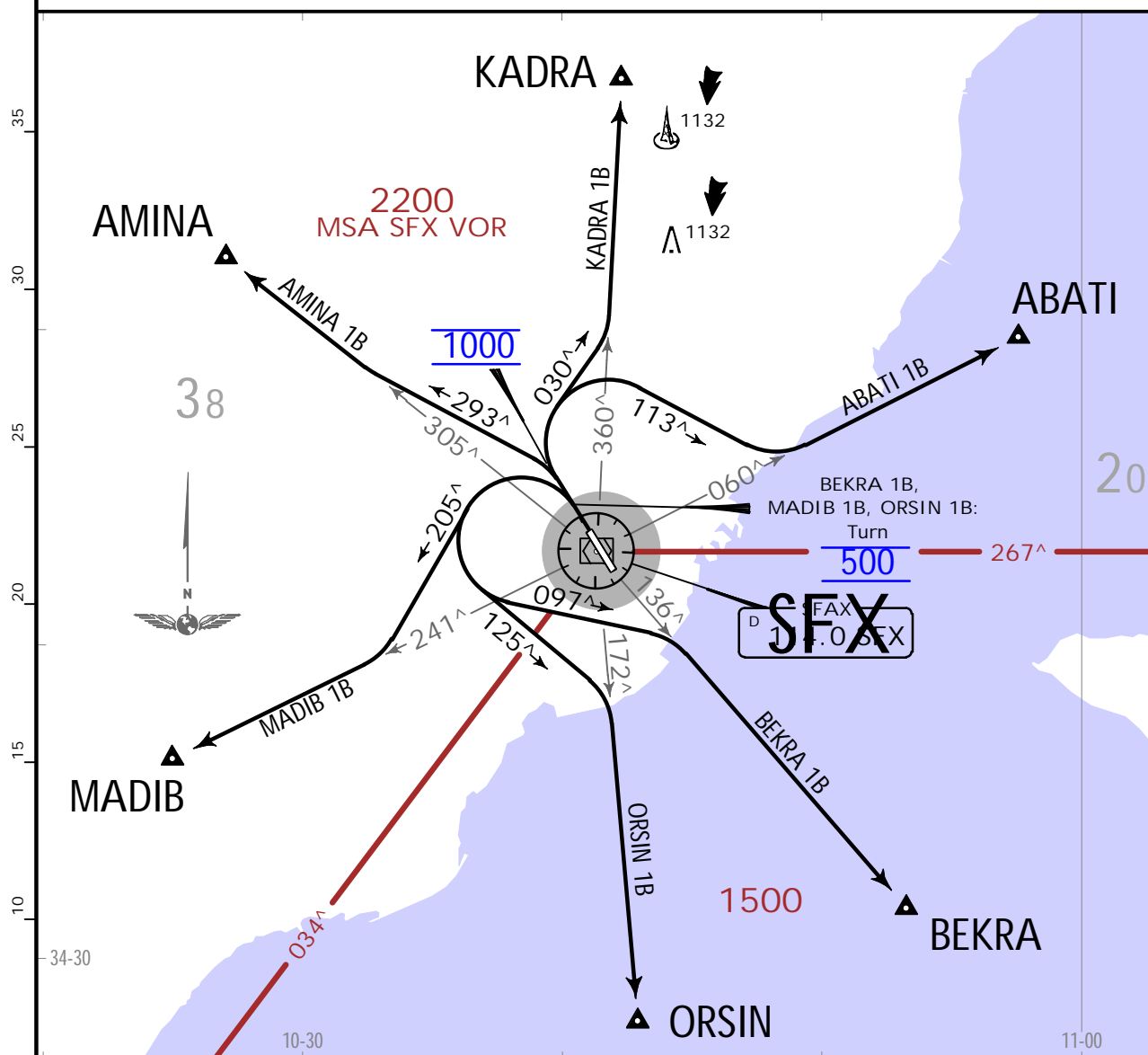
85

Trans alt: 6000

ABATI 1B [ABAT1B], AMINA 1B [AMIN1B]
BEKRA 1B [BEKR1B], KADRA 1B [KADR1B]
MADIB 1B [MADI1B], ORSIN 1B [ORSI1B]

DEPARTURES
(RWY 33)

.SPEED: MAX 250 KT BELOW FL100



These SIDs require minimum climb gradients of

| | |
|-----------|-------------------------------|
| ABATI 1B: | 365 per NM (6.0%) until 7500. |
| AMINA 1B: | 487 per NM (8.0%) until 7500. |
| BEKRA 1B: | 365 per NM (6.0%) until 5000. |
| KADRA 1B: | 487 per NM (8.0%) until 7500. |
| MADIB 1B: | 414 per NM (6.8%) until 7500. |
| ORSIN 1B: | 365 per NM (6.0%) until 6000. |

If unable to comply advise ATC.

| | | | | | | |
|--------------|-----|-----|------|------|------|------|
| Gnd speed-KT | 75 | 100 | 150 | 200 | 250 | 300 |
| 365 per NM | 456 | 608 | 913 | 1217 | 1521 | 1825 |
| 414 per NM | 518 | 690 | 1035 | 1380 | 1725 | 2070 |
| 487 per NM | 609 | 812 | 1218 | 1623 | 2029 | 2435 |

No turn permitted below 500.

| SID | ROUTING |
|----------|--|
| ABATI 1B | Climb straight ahead, at 1000 turn RIGHT, 113^ track, intercept SFX R060 to ABATI. |
| AMINA 1B | Climb straight ahead, at 1000 turn LEFT, 293^ track, intercept SFX R305 to AMINA. |
| BEKRA 1B | Climb straight ahead, at 500 turn LEFT, 097^ track, intercept SFX R136 to BEKRA. |
| KADRA 1B | Climb straight ahead, at 1000 turn RIGHT, 030^ track, intercept SFX R360 to KADRA. |
| MADIB 1B | Climb straight ahead, at 500 turn LEFT, 205^ track, intercept SFX R241 to MADIB. |
| ORSIN 1B | Climb straight ahead, at 500 turn LEFT, 125^ track, intercept SFX R172 to ORSIN. |